

#86

Sample 614-061623-035

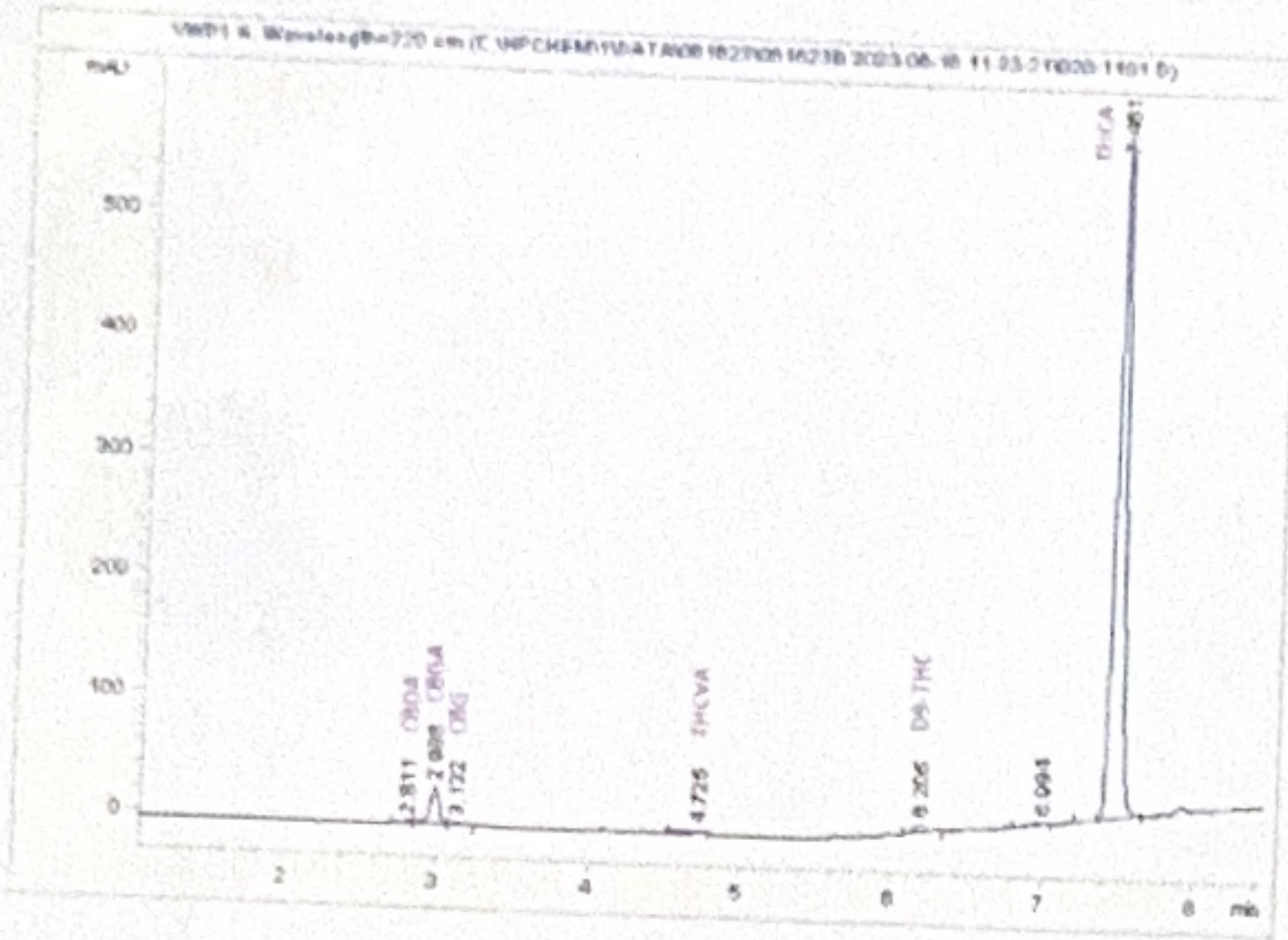
Sample Date: 03-26-2024; Report Date: 03-28-2024

Pink Runtz THCa Hemp Flower

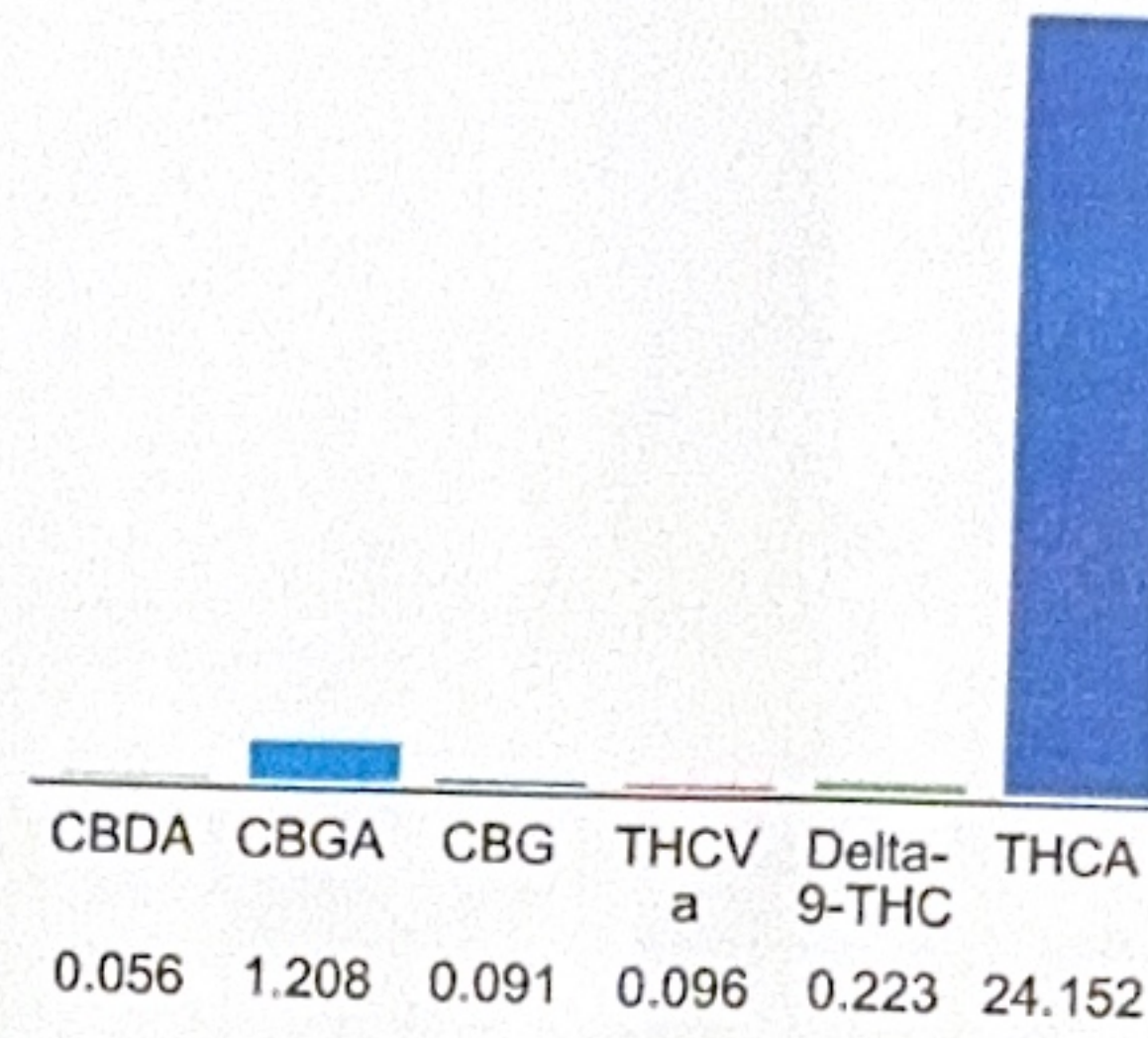
Batch/Lot # PR-01-RMD

Plant Material: Flower

Chromatogram



Cannabinoid Profile



Cannabinoid Profile by HPLC

0.22%
Delta-9-THC

0.00%
CBD

25.83%
Total Cannabinoids

Cannabinoid	% wt	mg/g
CBDA	0.056	0.56
CBGA	1.208	12.08
CBG	0.091	0.91
THCVa	0.096	0.96
Delta-9-THC	0.223	2.23
THCA	24.15	241.52
Total Cannabinoids	25.83	258.3
Calculated Total THC	21.40	214.04
Calculated CBD Yield	0.05	0.49

Calculated Total THC = Delta-9-THC + 0.877 * THCA
 Calculated Maximum CBD Yield = CBD + 0.877 * CBDA

Marin Analytics, LLC
 250 Bel Marin Keys Blvd, Suite D4
 Novato, CA 94949

833-321-TEST / info@marinanalytics.com

Sara Biancalana

Sara Biancalana
 Chief Scientist

This sample has been tested by Marin Analytics, LLC using valid testing methodologies and a quality system. Values reported relate only to the sample tested. Marin Analytics, LLC makes no claims as to the efficacy, safety, or other risks associated with any detected or non-detected levels of any compounds reported herein. This Certificate shall not be reproduced except in full without the written approval of Marin Analytics, LLC. Copyright 2023 Marin Analytics, LLC All Rights Reserved.